



112 FINCHLEY ROAD
LONDON NW3 5HT
INFO@RHWESTATES.CO.UK
020 7431 7121

WWW.RHWESTATES.CO.UK



CONRAD COURT
NEEDLEMAN CLOSE
LONDON
NW9 5ZW

*** VIDEO TOUR***

We are delighted to offer this stunning two double bedrooms, two bathroom apartment within the very popular new Pulse Development.

The flat is on the 6th floor (with a lift) and benefits from a large balcony with unrestricted views. The apartment is finished to a very high standard throughout and located within a few minutes walk to Colindale tube station with direct access to Central London. The property has now been furnished

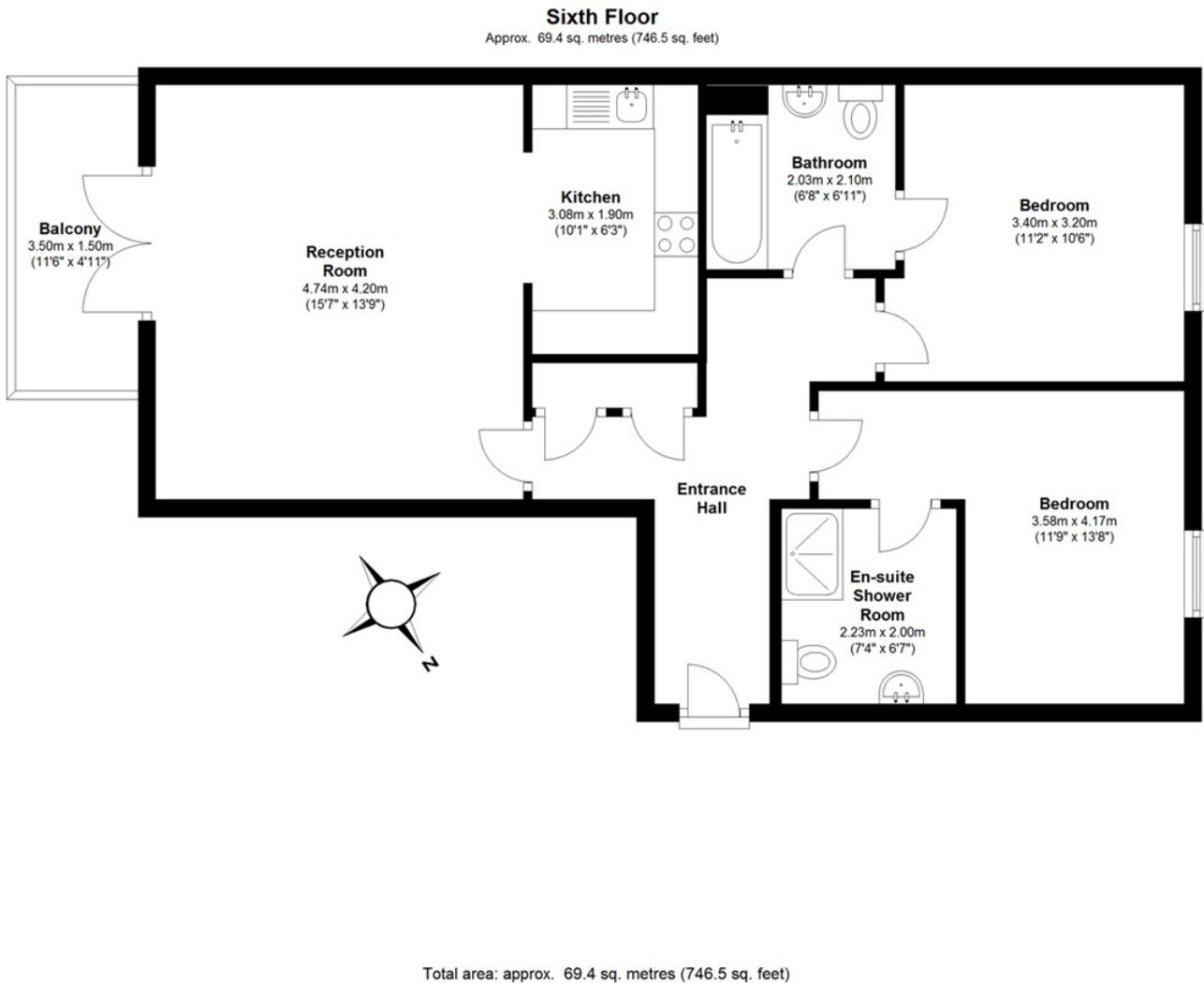
PRICE: £2,000 PCM

FURNISHED



FEATURES:

- Modern Development
- 2 Double bedrooms
- Spacious Reception
- Balcony
- Near tube station



Energy Efficiency Rating		
	Current	Potential
Very energy efficient - lower running costs		
(92 plus) A		
(81-91) B	86	86
(69-80) C		
(55-68) D		
(39-54) E		
(21-38) F		
(1-20) G		
Not energy efficient - higher running costs		
England & Wales	EU Directive 2002/91/EC	

IMPORTANT NOTICE

Whilst every attempt has been made to ensure the accuracy of these details and floor plans contained here, measurements of doors, windows and rooms are approximate and no responsibility is taken for any error, omission or mis-statement. These plans and details are for representation only as defined by RICS code of measuring practice and should be used as such by any prospective tenant. Not to scale. Copyright: RHW Estates

